

Superior North Trail Inventory Project



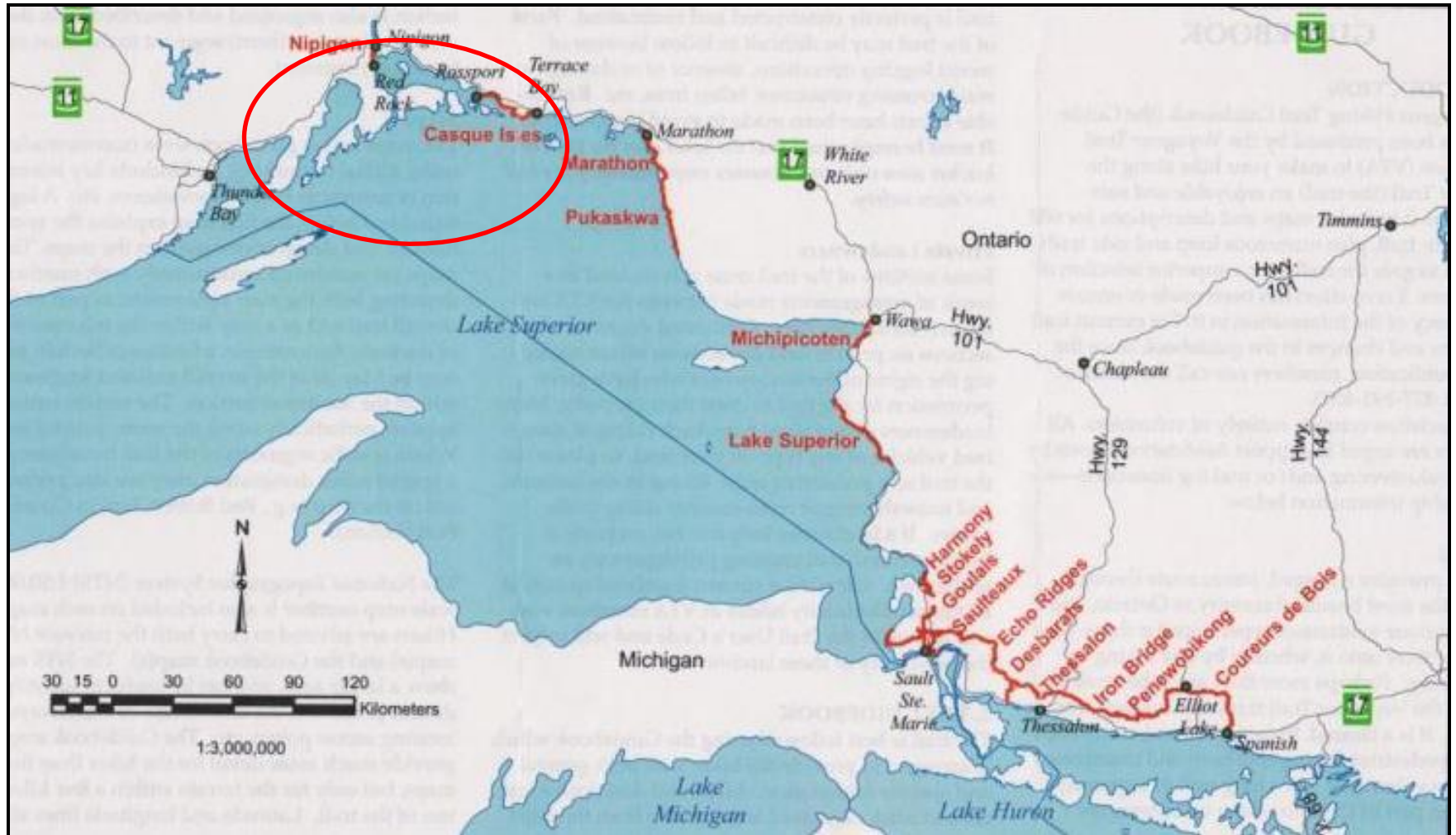
Kirsten Spence, Quercwood Consulting

Northshore Trail Projects



Other trails not included on this map – Path of the Paddle, snowmobile trails, Lake Superior Water Trail, cycling routes, municipal trails from Pass Lake/Thunder Bay west

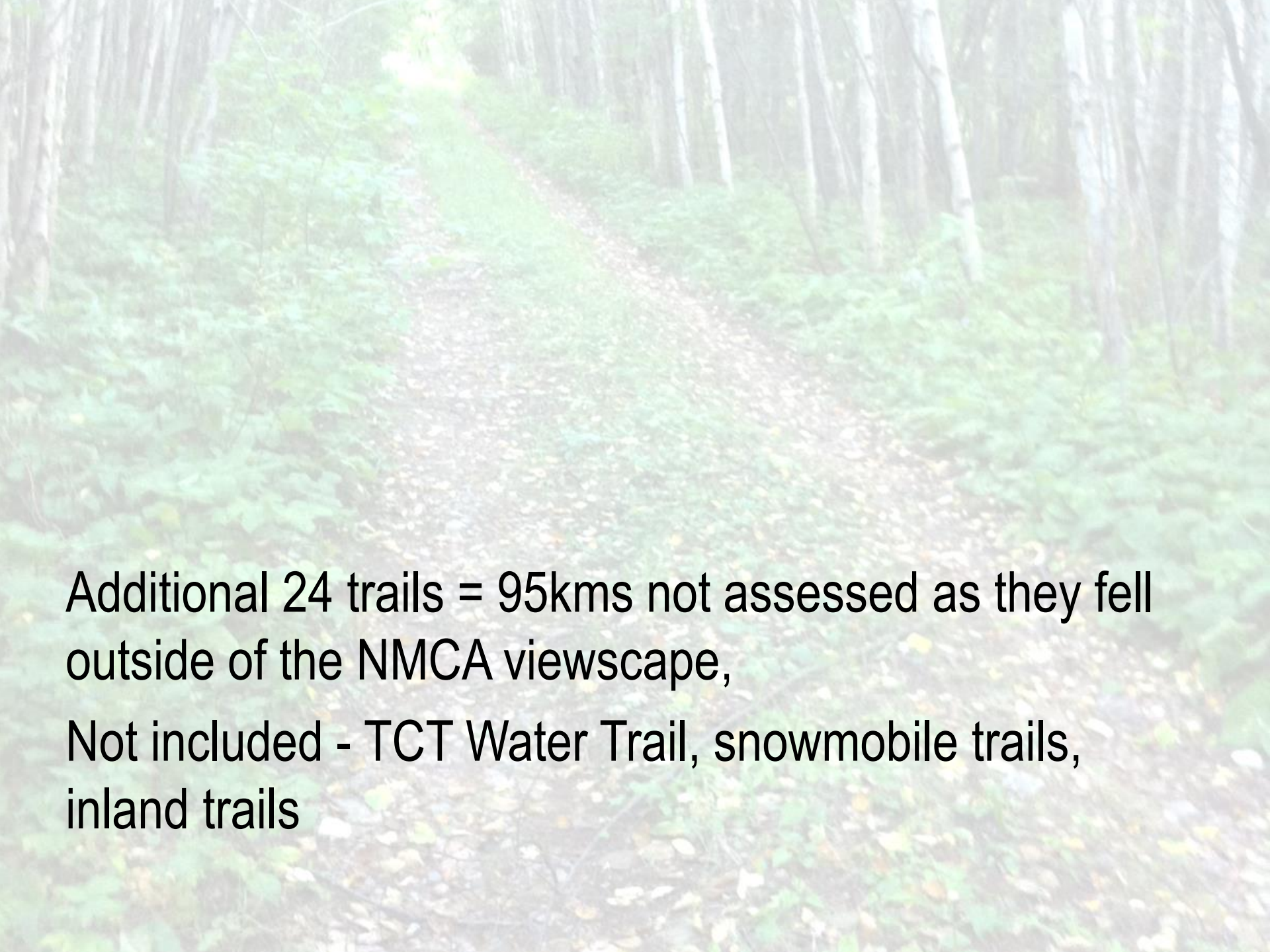
Lake Superior National Marine Conservation Area



NMCA Inventory Spring 2014

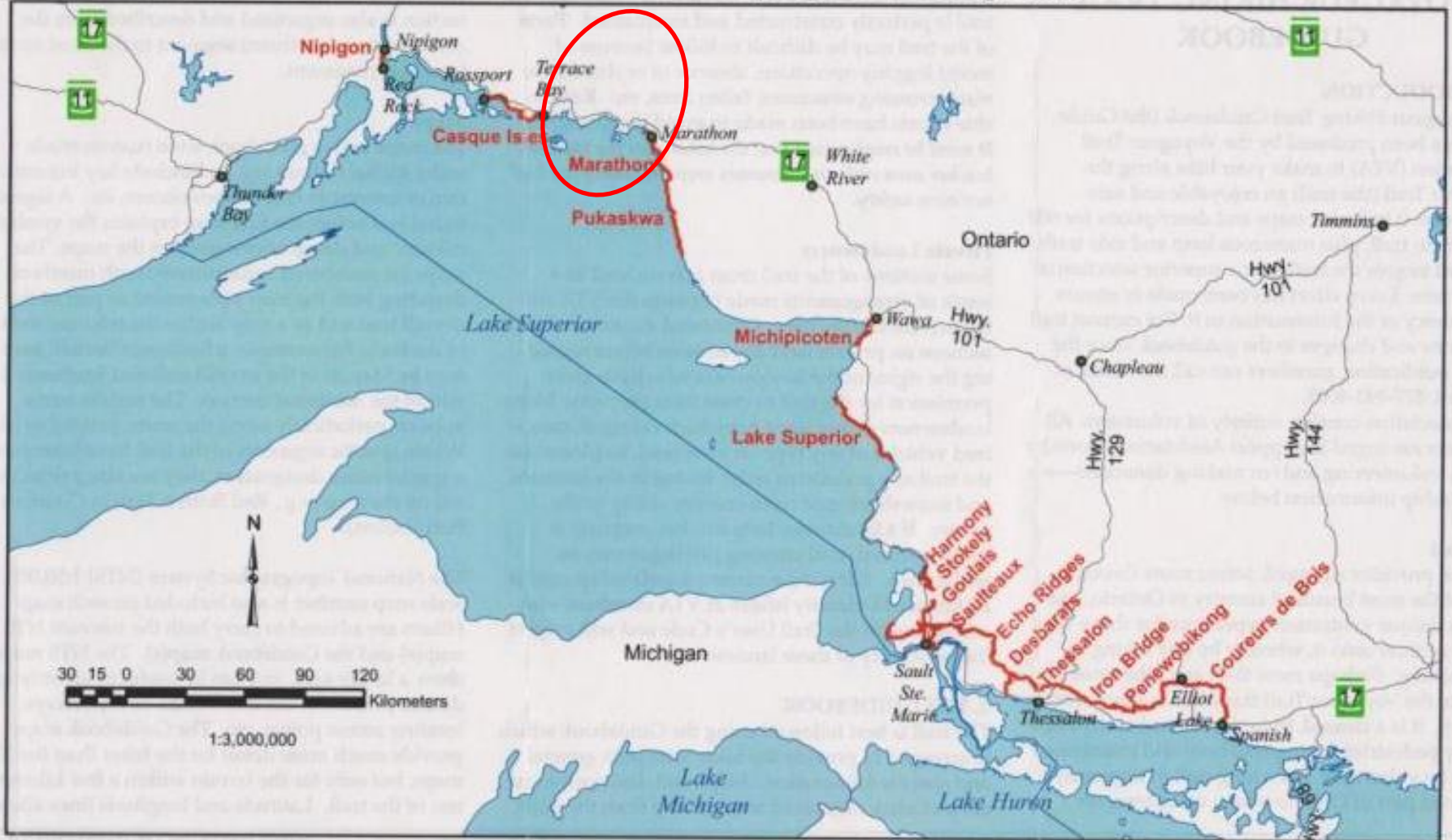
- Inventory of existing trails within the viewscape of the NMCA – Dorion to Terrace Bay
- Non-Motorized trails not included
- Group in place, maintained and managed
- Parks Canada's Trails Classification System
- Capture new trails and existing trails
- Costs of new trail, maintenance requirements with costs, timelines etc.
- Information to prioritize future trail development
- Report was released to the communities

- Assessed 28 existing trails within the study area
= 170kms of trail
- 8 new trail opportunities identified = 242kms
- Budgets
 - \$202K short-term construction (1 year timeline)
 - \$5.7M long-term construction (multiple years)
 - Maintenance is estimated @\$120K for 412 kms of trail
- Assessed if the trail was investment ready

A photograph of a forest path. The path is covered in fallen leaves and is flanked by dense green undergrowth. Tall, thin trees are visible in the background, creating a dappled light effect on the forest floor.

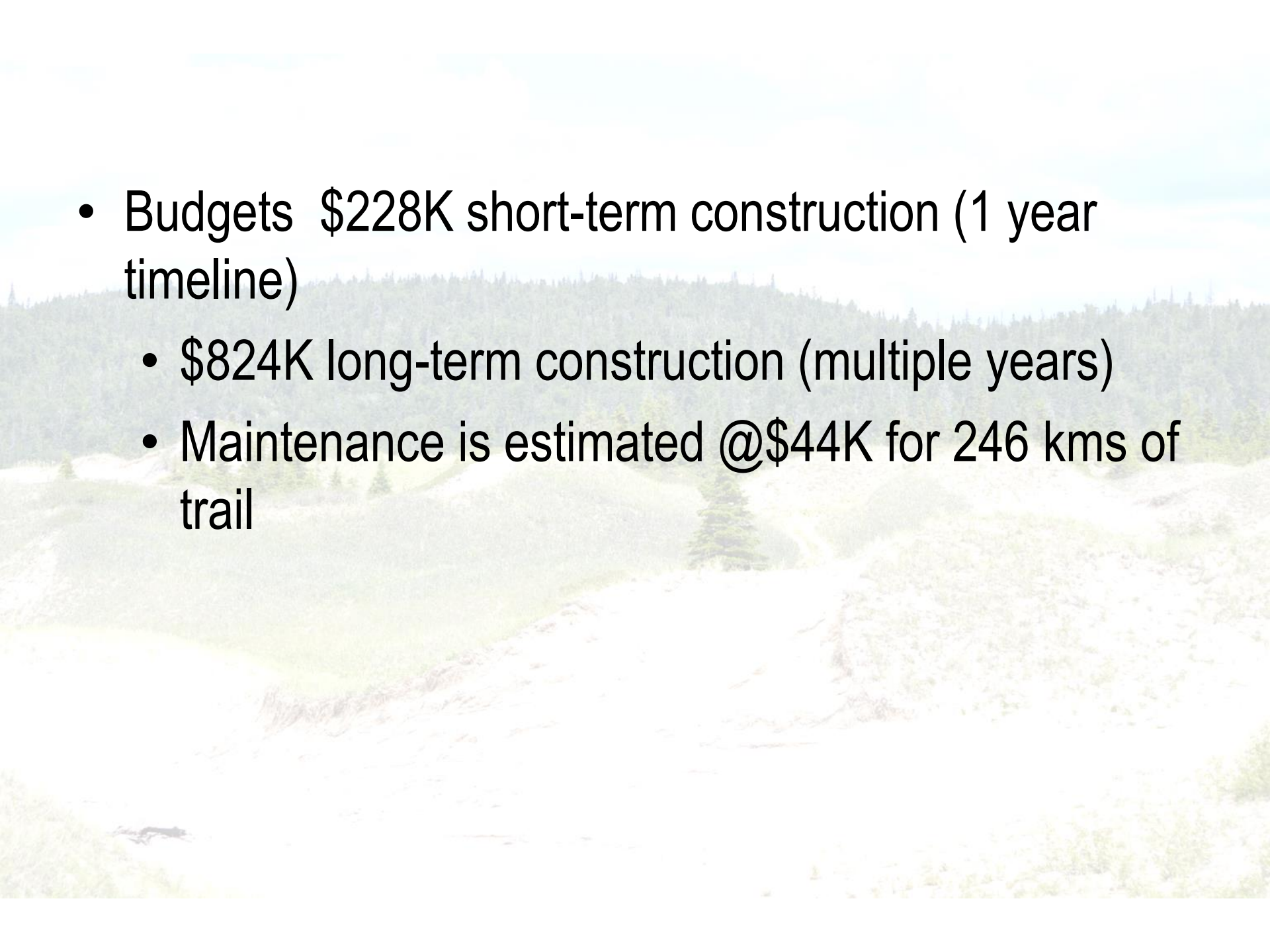
Additional 24 trails = 95kms not assessed as they fell outside of the NMCA viewscape,
Not included - TCT Water Trail, snowmobile trails, inland trails

Overview of Voyageur Hiking Trail



Other Northshore Communities

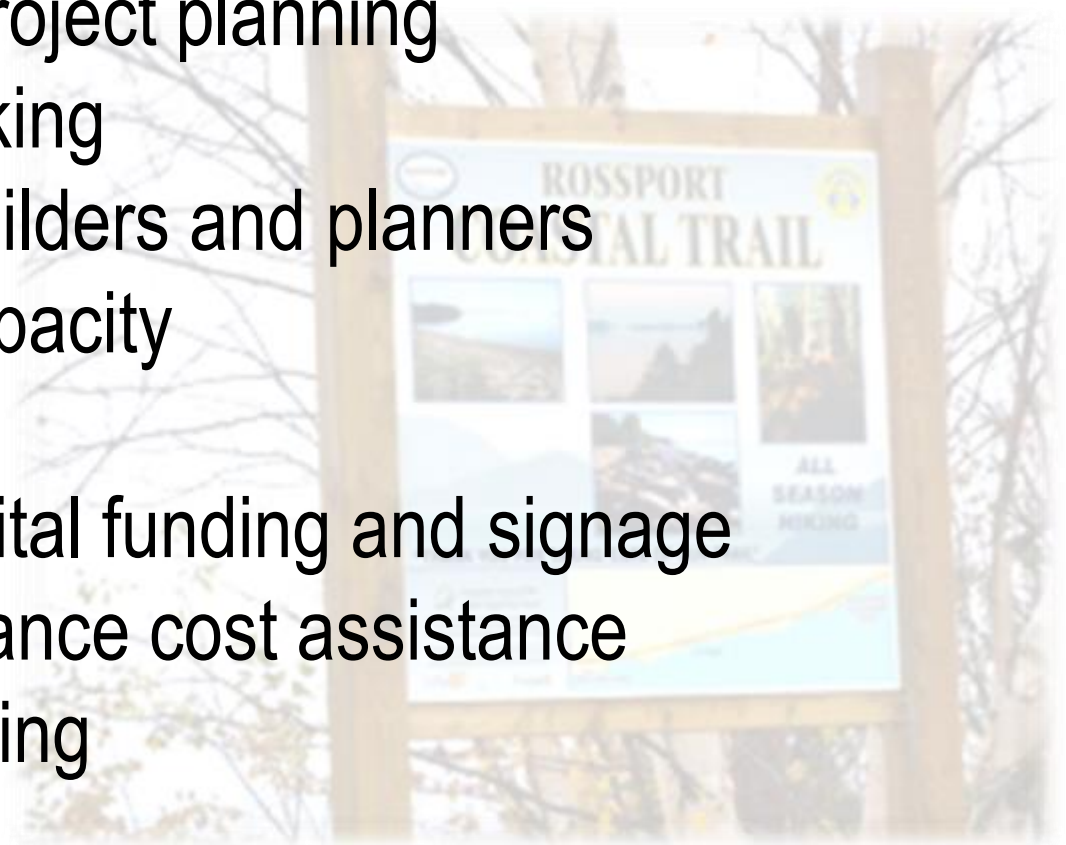
- Superior North CFDC provided funding to Marathon, Manitouwadge, Terrace Bay & Pic River/Heron Bay to complete the trail inventory for rest of the region
- Focus of the report on work plans, cost inputs and next steps to create a strong trail network in these communities in the next 10 years
- Identified 37 existing trails in the 4 communities = 156km
- 16 new trail opportunities identified = 110kms

- 
- A scenic view of a mountain trail winding through a forested valley. The foreground shows a rocky, light-colored path or clearing. In the middle ground, a river flows through a lush green valley. The background is dominated by a dense forest of evergreen trees under a clear blue sky.
- Budgets \$228K short-term construction (1 year timeline)
 - \$824K long-term construction (multiple years)
 - Maintenance is estimated @\$44K for 246 kms of trail

Common Themes From Regional Consultation

Topics identified by various groups that they need help with:

- Assistance with project planning
- Forum for networking
- Training of trail builders and planners
- Organizational capacity
- Insurance
- Investment in capital funding and signage
- Ongoing maintenance cost assistance
- Promotions/branding



Common Opportunities Identified

A number of opportunities were also identified:

- Northshore branding of trails
- Collaborative Funding Application opportunities
- Creation of a regional signage guidelines
- Mentoring under other trail organizations
- Coordination through a regional entity
- Regional interpretation of history, culture, geography
- Regional Trail Guidebook for visitors

The Future?

- Complete the trail inventory in Northwestern Ontario
- Provide the figures for the investment required
- Blueprint for new trail development – not so adhoc
- Help with some of the front work of trail development
- Include in regional plans like Northern Growth Strategy etc.
- Engage various enablers at the right time