

Trailhead North Algoma

PARTNERSHIPS



Sault Ste. Marie Region Conservation Authority

SSMRCA

Who we are

What we do

Partnerships and their importance



SSMRCA

Mandate - Conservation Authorities, created in 1946 by an Act of the Provincial Legislature, are mandated to ensure the conservation, restoration and responsible management of Ontario's water, land and natural habitats through programs that balance human, environmental and economic needs.

Vision - Healthy watersheds existing in a balance between the natural environment and human needs.

Mission Statement - To protect, improve and promote local watersheds through the delivery of resource management services and programs in cooperation with community partners.



SSMRCA

SSMRCA is one of 36 Conservation Authorities in the Province of Ontario

- The SSMRCA owns and manages over **5,000 acres** of diverse ecosystems including forests, wetlands and shorelines.
- Some of the properties contain significant natural features while others hold portions of our five flood control channels and the Fort Creek Dam and Reservoir.
- Water control structures help protect against the loss of life and property damage due to flooding. Sault Ste. Marie and Prince Township are home to approximately 74,000 people.
- Administer Ontario Regulation 176/06 to regulate development and activities in specific areas to reduce the threat of loss of life and property damage from natural hazards such as erosion and pollution and to minimize flooding.



SSMRCA

SSMRCA is the smallest CA in the province

Funding – municipalities, province and permit fees

Programs – programs based on local needs and capacity



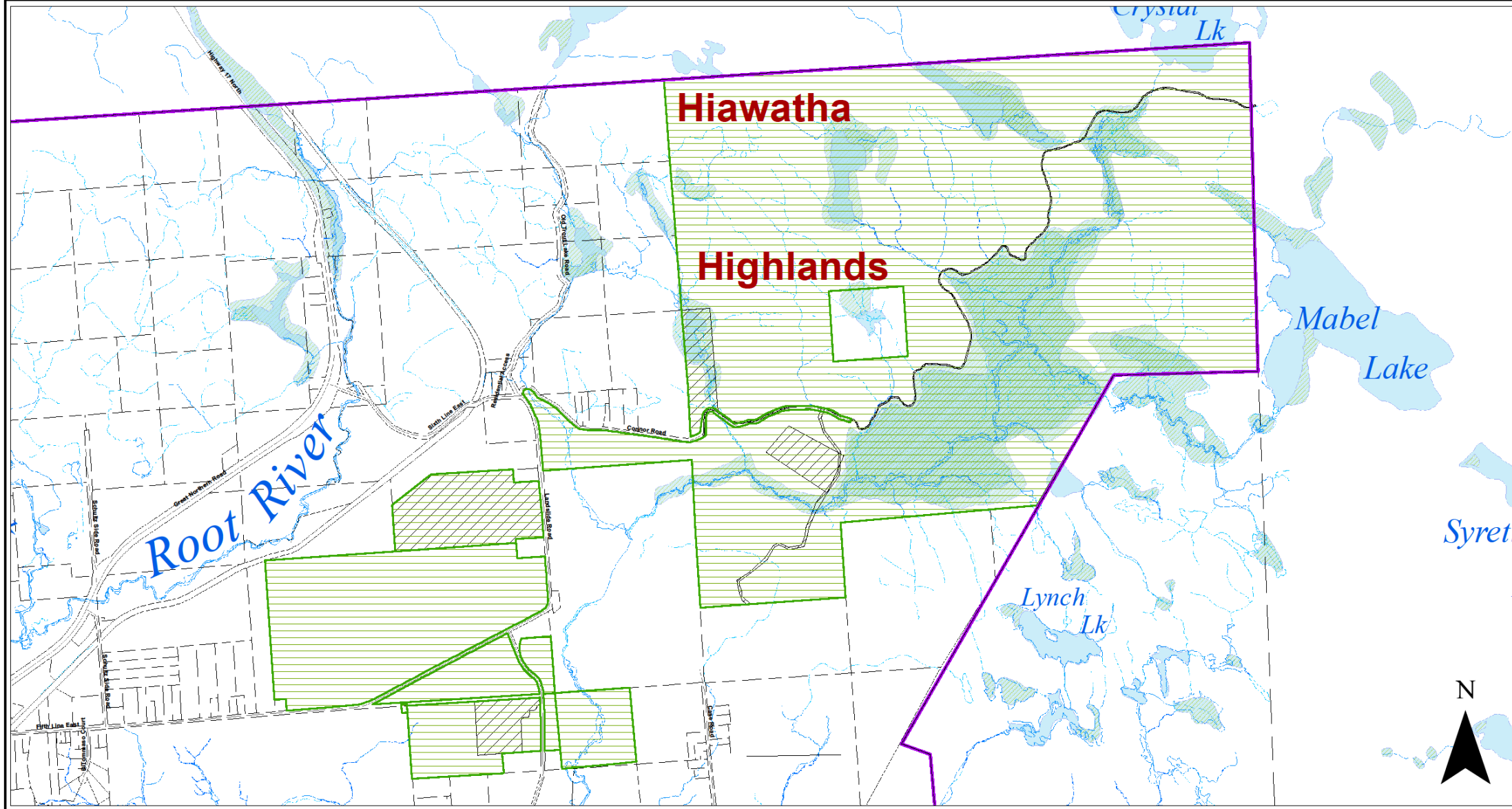
Hiawatha Highlands

Hiawatha Highlands Conservation Area

Location: North-eastern limit of the City of Sault Ste. Marie

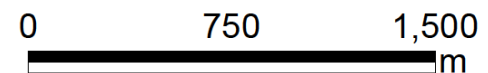
Area: 2,206.55 acres or 892.964 hectares

Activities: unmaintained hiking trails, cross country ski trails, snowshoe trails, VTA trails, bike trails, snowmobile trails, Scouts Canada camp, research



Legend

- Municipal Boundary
- ▨ SSMRCA_Property
- ▨ LandUseAgreements
- ▭ ADM_Parcel_2017
- Creek_Stream
- Creek_Stream_Indefinite
- Intermittent
- Reservoir
- River
- River_Indefinite
- Street_Center_Line
- ▨ OPWetlands

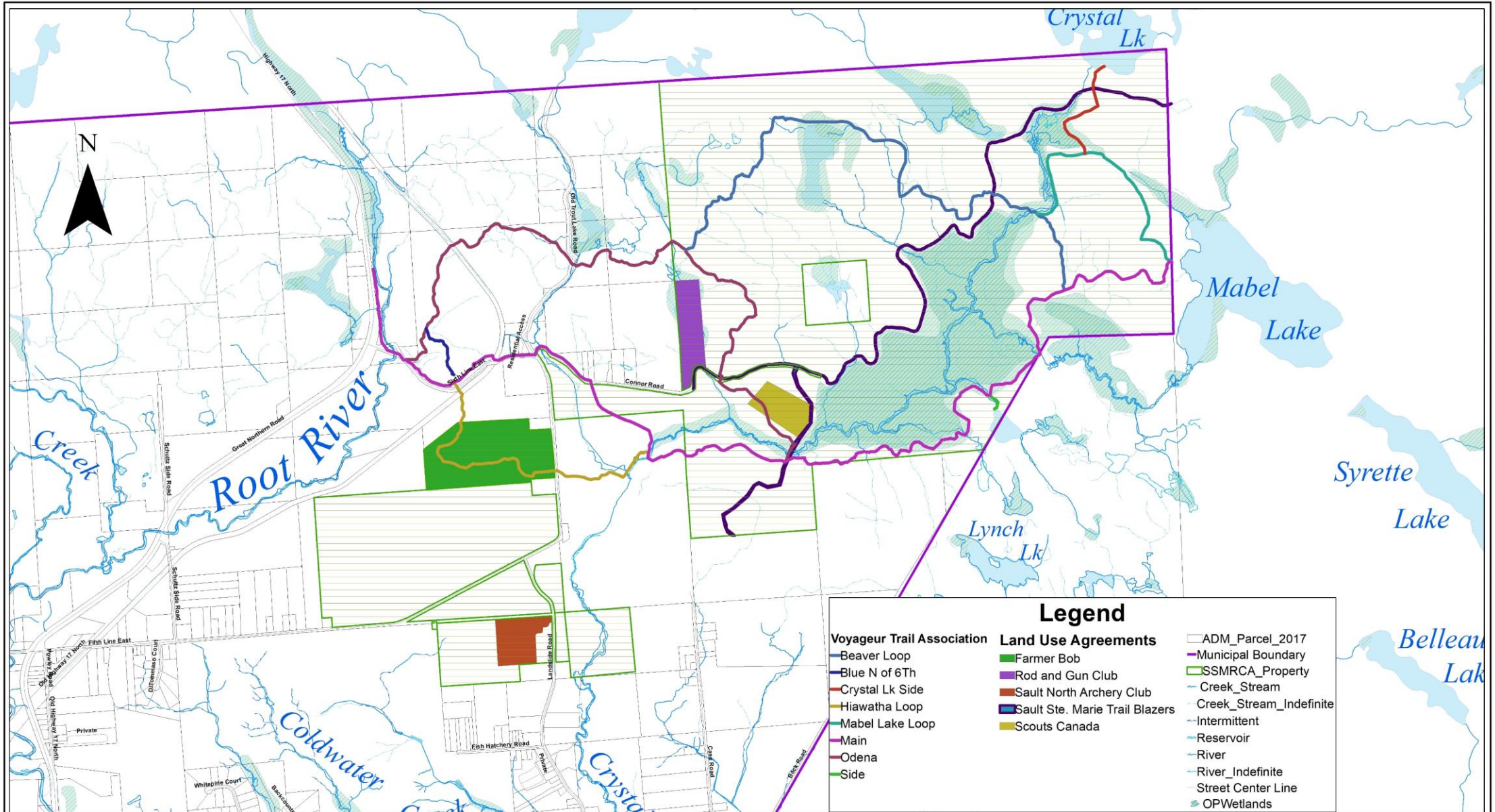


**Hiawatha Highlands Conservation Area
Sault Ste. Marie**



Copyright © SSMRCA 2018
 ArcGIS 10.3.1 2017 -
 Digital Base Mapping
 supplied by the City of
 Sault Ste. Marie
 Planning Department
 and PUC.
 Orthophoto April 2012 (if shown).
 OGDE - © Queen's Printer for Ontario, 2011

This map is illustrative only. Do not rely on it as being a precise indicator of boundaries, routes, locations of features, nor as a guide to navigation.

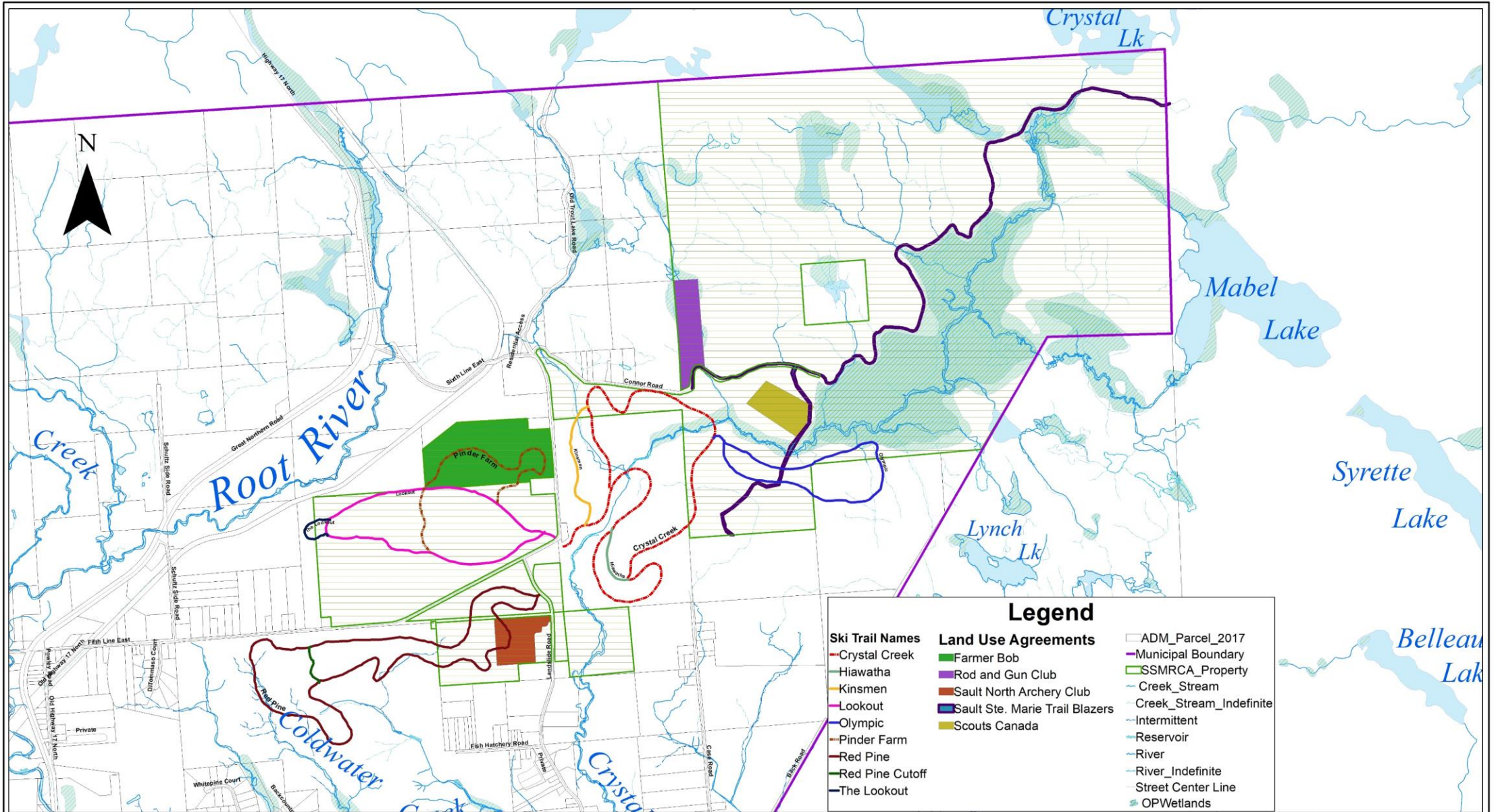


**Hiawatha Highlands Conservation Area
Voyageur Trail Association**

Copyright © SSMRCA 2018

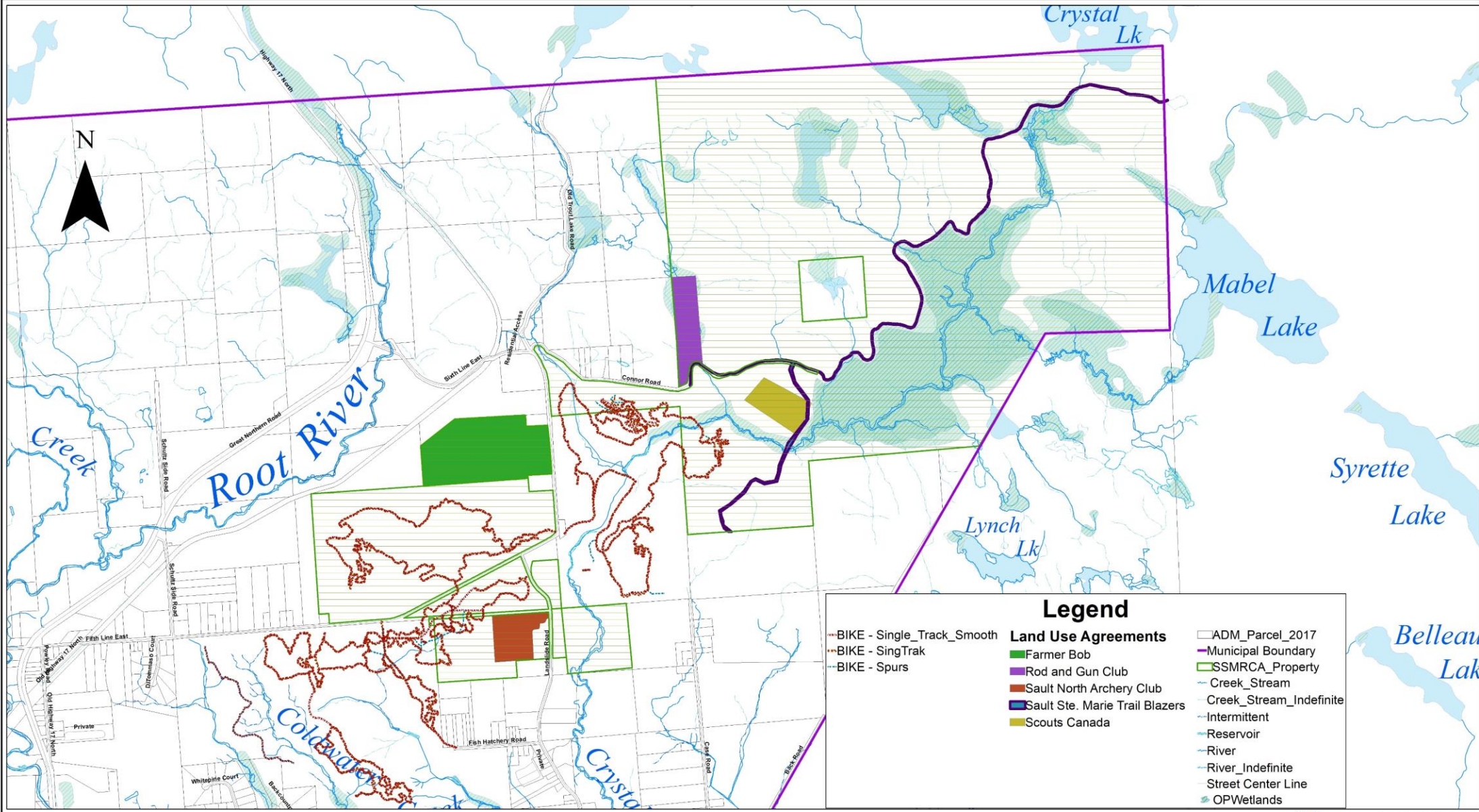


ArcGIS 10.3.1 2017 -
Digital Base Mapping
supplied by the City of
Sault Ste. Marie
Planning Department



**Hiawatha Highlands Conservation Area
Hiawatha Highlands Ski Trails
Sault Ste. Marie**





**Hiawatha Highlands Conservation Area
Single Track Bicycle
Sault Ste. Marie**

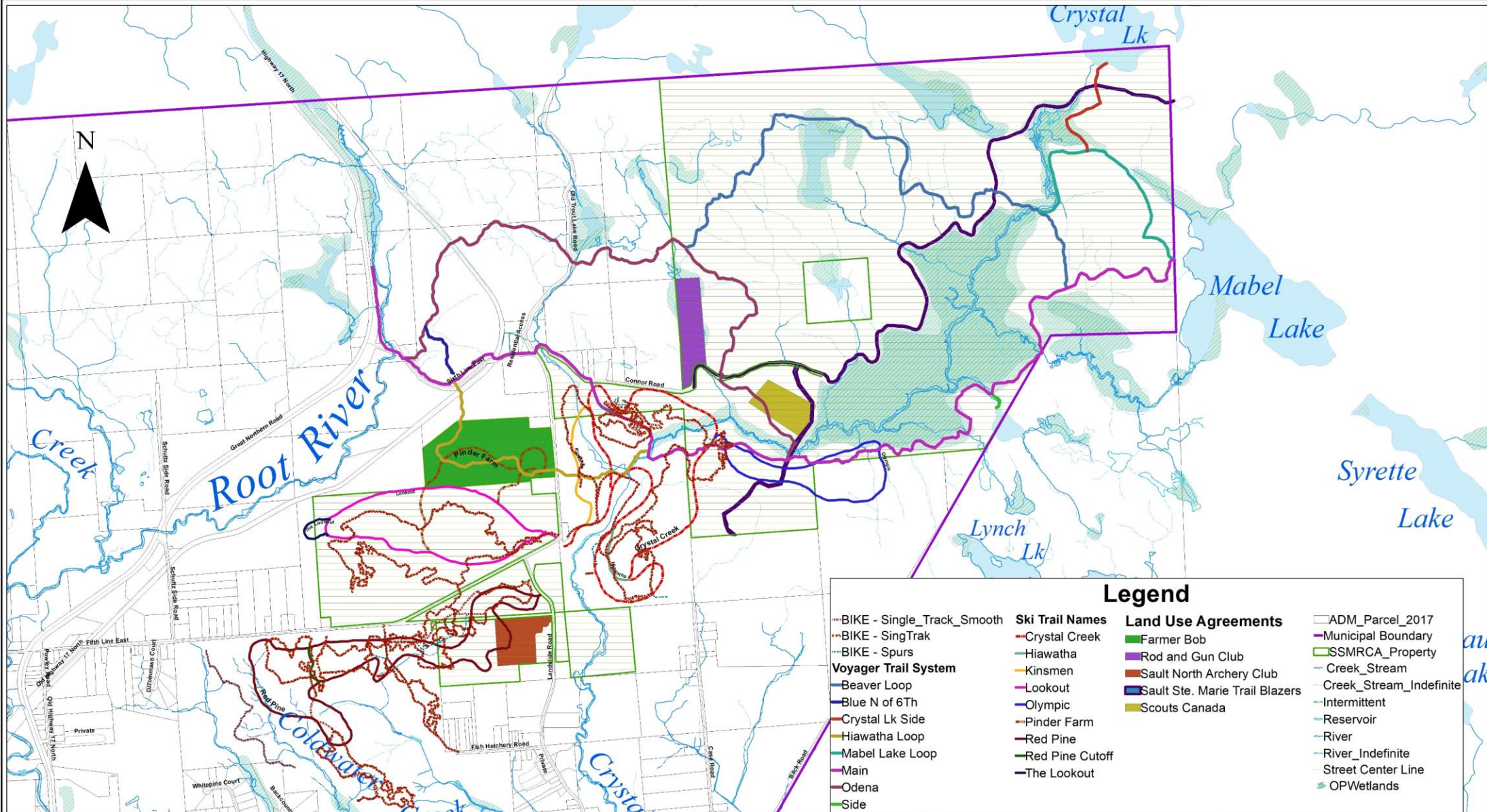


Copyright © SSMRCA 2018

ArcGIS 10.3.1 2017 -
Digital Base Mapping
supplied by the City of
Sault Ste. Marie
Planning Department
and PUC.

Orthophoto April 2012 (if shown).
OGDE - © Queen's Printer for Ontario, 2011

This map is illustrative only. Do not rely on it as being a precise indicator of boundaries, routes, locations of features, nor as a guide to navigation.



**Hiawatha Highlands Conservation Area
Organized Users
Sault Ste. Marie**

Legend

<ul style="list-style-type: none"> ---BIKE - Single_Track_Smooth ---BIKE - SingTrak ---BIKE - Spurs Voyager Trail System Beaver Loop Blue N of 6Th Crystal Lk Side Hiawatha Loop Mabel Lake Loop Main Odena Side 	<p>Ski Trail Names</p> <ul style="list-style-type: none"> Crystal Creek Hiawatha Kinsmen Lookout Olympic Pinder Farm Red Pine Red Pine Cutoff The Lookout 	<p>Land Use Agreements</p> <ul style="list-style-type: none"> Farmer Bob Rod and Gun Club Sault North Archery Club Sault Ste. Marie Trail Blazers Scouts Canada 	<ul style="list-style-type: none"> ADM_Parcel_2017 Municipal Boundary SSMRCA_Property Creek_Stream Creek_Stream_Indefinite Intermittent Reservoir River River_Indefinite Street Center Line OPWetlands
---	---	---	---



Copyright © SSMRCA 2018
 ArcGIS 10.3.1 2017 -
 Digital Base Mapping
 supplied by the City of
 Sault Ste. Marie
 Planning Department
 and PUC.
 Orthophoto April 2012 (if shown).
 OGDÉ - © Queen's Printer for Ontario, 2011

This map is illustrative only. Do not rely on it as being a precise indicator of boundaries, routes, locations of features, nor as a guide to navigation.



Hiawatha Highlands Partnerships

Regulated Activities:

Hiking

Cross Country Running

Cross Country Skiing

Snowmobile

Kiwanis Club Pancake Breakfasts

Mountain Biking

Archery

Snowshoe

Fat Bikes

Fundraising Events

Research

Camp

Special Events

Forestry

Other Activities:

Weddings or special occasion photography

Dog walking

Police training



Hiawatha Highlands Partnerships

Existing Partnerships/Opportunities

Educational institutions – Sault College, Algoma University and School Boards

Provincial Government – MNRF - Forests Division, Forest Research, District Office
MOECC Area Office

Federal Government – Natural Resources Canada (Forestry), National Historic Park (locks)

Municipal Government – Community Geomatics Centre, Culture and Recreation, Landfill
Committee,

Invasive Species Centre – Northern Ontario Head Office

Local Special Interest Groups – Voyageur Trail Assn, Ski Club, Cycling Club, Naturalist Club,
Clean North

Local Commercial – TD Bank, Royal Bank, Union Gas

++++ more